
Brown Paper Square bottom packaging bags with AL foil and PLA valve for coffee packing.



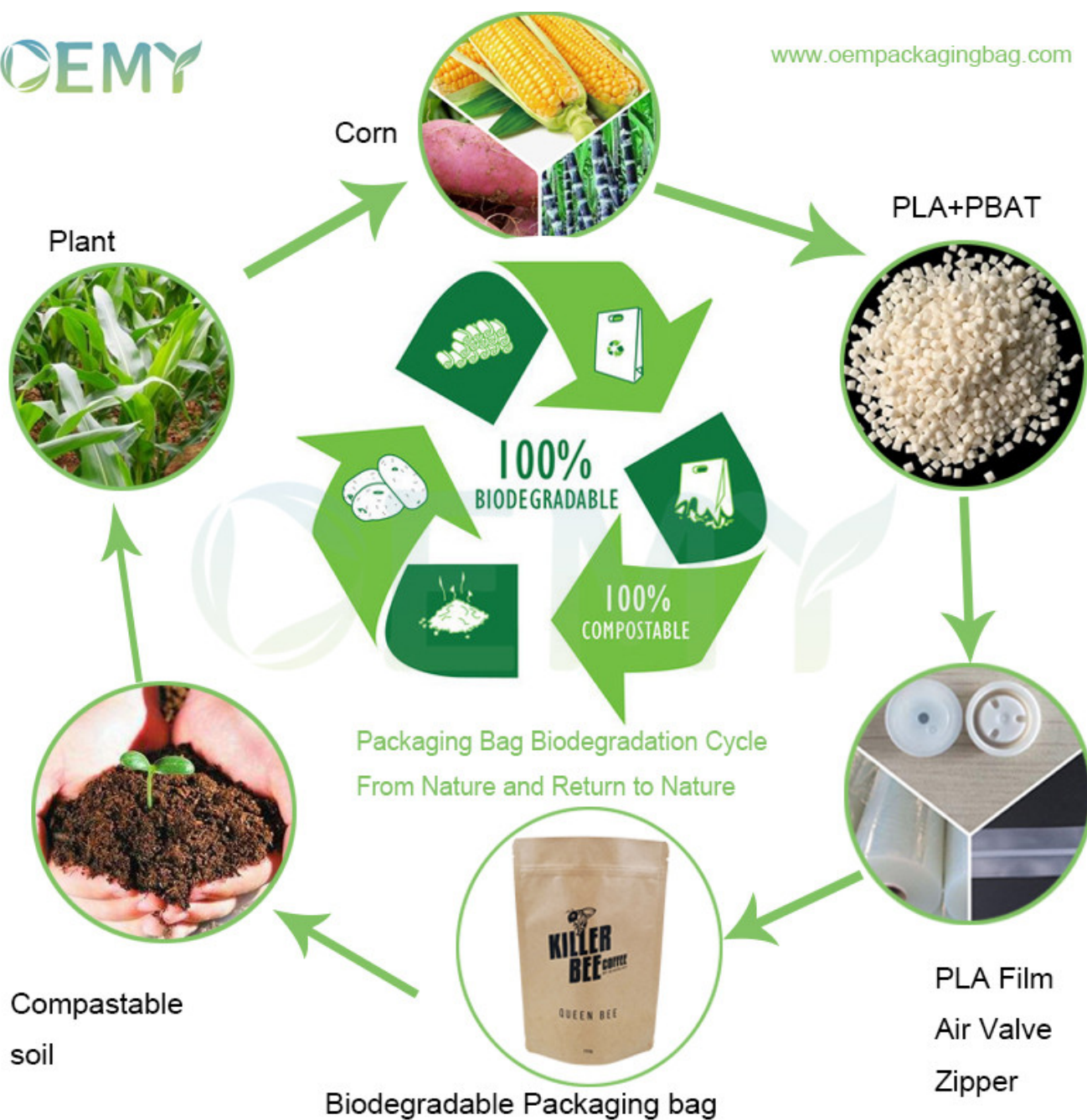
Product Description

Brown Paper Square bottom packaging bags with AL foil and PLA valve for coffee packing.



They are not only packaging bags for your coffee powder or coffee bean. They are also the carrier of your company's brand, mobile advertising, value communication. The most importance is that it is environmentally friendly.

1. Brown Paper Square bottom packaging bags with AL foil and PLA valve for coffee packing.
2. They are not only packaging bags for your coffee powder or coffee bean. They are also the carrier of your company's brand, mobile advertising, value communication. The most importance is that it is environmentally friendly.
3. Because we know its value, we make every packaging bag with our hearts.



- 1.The packaging bags made of PLA+PBAT+AL+Kraft paper, which is compostable materials.
- 2.When the packaging bags are out of use, they can be degraded into soil in a year and absorbed by plants. It's really come from nature and return to nature.
- 3.No more pollution to the environment. The world will become better and better.

The detail data of the biodegradable packaging bags

Item:	Brown Paper Square bottom packaging bags with AL foil and PLA valve for coffee packing.
Size&Thickness:	Custom based on your requirement
Ink type:	Eco-friendly Food Grade Soy Ink

Material:	PLA+AL+ Kraft paper
Feature :	1).Safety Food Grade material & Perfect Printing
	2).Great to prevent leakage, excellent Moisture-Proof
	3).Strong sealing Bottom & Good Display Effect
Certificates:	FSSC22000,SGS etc.. FDA certificate can also be made if necessary
Style Options:	Flat Bottom , Stand up , side gusset , Zipper Top, With or without Window, Euro Hole , etc.
Sealing & Handle	Heat Seal
Surface Handling	Embossing
Printing:	Copperplate printing,Offset printing
Color:	Up to 10 colors or No printing
Artwork format:	AI,PDF,CDR,PSD,etc,
MOQ:	10,000pcs
Price:	Based on the product Materials, Dimension, Quantity, Printing colors and other customer's Requirements (Price posted for reference only)
Payment:	T/T, Paypal,Western Union, Trade Assurance accept
	30% bag cost+100% printing cylinders charge as deposit,70% balance before shipment
Sample:	1). Free & Nice stock samples offered just freight collect
	2). Custom samples 7-15 working days (Send by Express)
	3). Refund Part/Full sample fee after deposit received
Lead Time:	15-20 working days after design confirmed.
Port of loading:	Huangpu /Shenzhen/, or As per your requirement
Packing:	Export standard packaging cartons/boxes(≤ 25Kg),as per customized packaging

The Feature Pictures of Biodegradable Packaging Bags



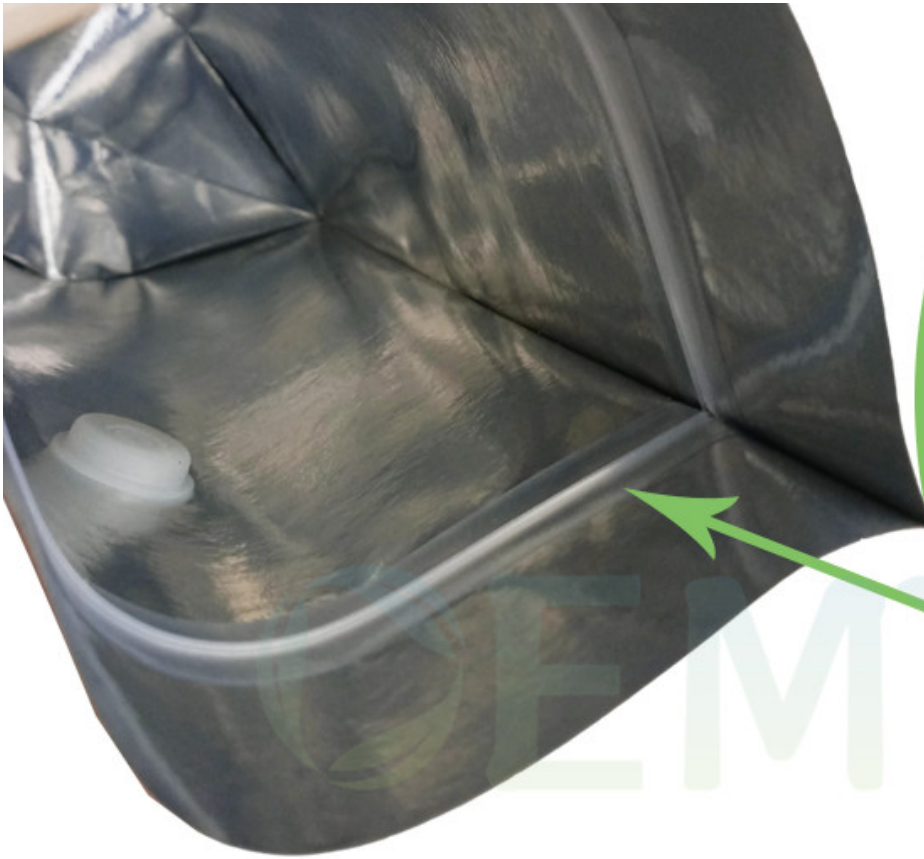
Excellent waterproof performance

The bag is waterproof and moisture-proof, and it is easy to cope with the low temperature and wet season





Strong stand up bottom, with large carrying capacity. keep every pouch standing up like trained soldiers



The tightly zipper, made of PLA, which can be opened and closed repeatedly, Guarantee the tightness of the bag. Can be degraded in the soil

With aluminum foil. The feature of AL is with high temperature resistance (121 ° C), low temperature resistance (-50 ° C), good oil resistance and good aroma retention performance. And with Non-toxic and tasteless, in line with food and pharmaceutical packaging hygiene standards.





Accurate text printing, correctly delivering advertising information
Professional color printing without any overflow

The easy-to-tear design is convenient for consumers to open the package, and our process can ensure the position of each easy-to-tear port is consistent.



High quality ECO friendly packaging bags for nuts packing. No more pollution to the environment, more clean to the world.



The special feature of the biodegradable packaging bags for coffee

1. Fully degradable air valve, which allows the gas emitted by coffee beans to be discharged outside the bags, ensuring the safety and integrity of the packaging bags
2. Accurate text printing, correctly delivering advertising information

Professional color printing without any overflow

3. The easy-to-tear design is convenient for consumers to open the package, and our process can ensure the position of each easy-to-tear port is consistent.

4.The tightly zipper, made of PLA, which can be opened and closed repeatedly,

Guarantee the tightness of the bag. Can be degraded in the soil

5.Strong stand up bottom , with large carrying capacity. keep every pouch standing up like trained soldiers

6.Strong tensile. The packaging bag with good tear resistance and durable

7. With aluminum foil. The feature of AL is with high temperature resistance (121 ° C), low temperature resistance (-50 ° C), good oil resistance and good aroma retention performance. And with Non-toxic and tasteless, in line with food and pharmaceutical packaging hygiene standards.

8.High quality white Kraft paper, biodegradable PLA film, it's environmentally friendly and great value

9.Excellent waterproof performance

The bag is waterproof and moisture-proof, and it is easy to cope with the low temperature and wet season.

10.High quality ECO friendly packaging bags for nuts packing. No more pollution to the environment, more clean to the world.

The Picture of biodegradable valve for the packaging bags



1.In the market, 99.9% of the air valves are made of PE plastic, and it takes 1000 years to completely degrade. It is a great harm to the environment. However, the PLA air valve is made of plant material and can be degraded in the soil within 2-3 years. Become water and carbon dioxide absorbed by plants.

2.It is technically difficult to make an air valve from PLA. This technology is in the hands of a very small number of manufacturers, OEMY company is one of them.

The recommended size of side packaging bags

Size (W*H*Bottom cm)	Seed Package	Flour Package	Pet Food Package	Rice Package

9 x 6 x 6	30g	40g	40g	80g
10 x 15 x 6	40g	50g	50g	100g
12 x 20 x 8	90g	170g	130g	300g
14 x 20 x 8	130g	230g	180g	370g
14 x 22 x 8	160g	350g	230g	420g
16 x 22 x 8	210g	400g	330g	550g
16 x 26 x 8	260g	510g	380g	650g
18 x 26 x 8	360g	650g	440g	890g
18 x 30 x 10	440g	750g	630g	1120g
20 x 30 x 10	510g	1110g	680g	1440g
22 x 31 x 10	660g	1400g	950g	1660g
23 x 35 x 10	900g	1750g	1340g	2500g
30 x 40 x 12	1200g	2100g	1500g	3300g
Can Be Customized As Your Requirements				
The Data In The Table Are Only For Your Reference				

The Application of packaging bags



1. Biodegradable packaging bags are environmentally friendly bags that are very versatile. Mainly used for packaging: coffee bean, coffee powder, Tea leaves, Rice, dried fruit, snack food, dried meat, whole grains, tea, etc.

2. It's time to change your plastic packaging bags to biodegradable packaging bags. Less pollution to the environment, more green to the world.

The steps of our sales and production.



- 1.OEMY company is specialized in offering bio-degradable packaging solutions for different products.
- 2.Client is our first priority . We are dedicated to meeting clients. Demands and putting much resource into R&D. Our mission is to provide the right product and service for our clients.
- 3.We have the best machine and the most advanced technologies within the industry to produce the most detailed and high quality products. We ensure that all your requirements will be fulfilled on time.
- 4.Our success depends on the support of clients. Your success is our concern! We package your success, your excellent packages start from here.

Payment and Shipping OEMY Packaging

Payment



T/T

Shipping

A. If the quantity of order is not very big, it would be better to sent them by express delivery, such as TNT, DHL, UPS or Fedex etc.

B. If order is big, it would be better to sent them by air shipping or sea shipping through your nominated forwarder agent. Our long-term cooperated forwarder agents are also available.



5-7 working days
www.dhl.com



5-7 working days
www.fedex.com



7-10 working days
www.tnt.com



5-7 working days
www.ups.com



5-7 working days
www.ems.com.cn



www.oempackagingbag.com

Get customized packaging solution fro your order now.

Tel & WhatsApp & Wechat :#86+13711875799

Email: admin@oempackagingbag.com

Overview of Workshop

















FQA

Q1: Are you a manufacturer?

A: Yes, We are a 15 years manufacturer integrating R&D, manufacture, customization and marketing. Our factory Dongguan City of Guangdong Province, China

Q2: What information should I let you know about if I want to get a precise quotation?

A: Bag type, material, size, thickness, Product weight required

Q3: What is there any sample charge & is it refundable?

A: Stock samples for free, but you need pay the freight.

If you need us to make sample with your design, you need to pay the sample cost. And if place the order in the future and quantity reach certain number, we can return the sample cost to you.

Q4: Do you have any inspection for the products?

A: Quality and 100% biodegradable bags is our culture, we attach great importance to quality control from the very beginning of manufacturing, using 100% biodegradable material to make packaging bags, such as PLA, PBAT etc.

Q5: Are the air valve and zipper of the bags 100% biodegradable?

A: Yes. And the 100% biodegradable air valve and zipper were developed by our technicians.

Q6: Will you sell the bags with my trademark to other clients?

A: Absolutely not. We are an established company. We understand that one has copyright in his/its trademark. We respect the right and privacy of our clients and will not disclose to others.

Q7: What is your delivery period?

A: Our delivery period is generally within 15-25 days, but the actual delivery period depends on the requirements

Product

link :

<https://www.oempackagingbag.com/brown-paper-square-bottom-packaging-bags-with-al-foil-and-pla-valve-for-coffee-packing.html>