

---

## 8 Years Exporter China Automatic Biscuits/Potato Chip/ Candy/ Peanut Weighing and Packing Machine



We're going to commit ourselves to giving our esteemed buyers using the most enthusiastically considerate solutions for 8 Years Exporter China Automatic Biscuits/Potato Chip/ Candy/ Peanut Weighing and Packing Machine, We now have developed a responsible name amongst many customers. Quality&customer very first are usually our constant pursuit. We spare no endeavours to help make much better solutions. Look forward to long-term cooperation and mutual advantages! We're going to commit ourselves to giving our esteemed buyers using the most enthusiastically considerate solutions for [Biscuit Packing Machine](#), [China Pouch Packing Machine](#), We maintain long-term efforts and self-criticism, which helps us and improvement constantly. We strive to improve customer efficiency to save costs for customers. We do our best to improve the quality of product. We are going to not live up to the historic opportunity of the times.

### Product Description

---

Professional manufacturer of fully biodegradable nuts  
packaging bags



This is not only a packaging bags for your nuts products. It's carrier of your company's brand, mobile advertising and value communication to your customers. The most importance is that it is environmentally

1. Professional manufacturer of fully biodegradable nuts packaging bags
2. This is not just a simple packaging bags for your dried fruit. This is the carrier of your company's brand, mobile advertising and value communication to your customers. The most importance is that it is environmentally friendly.
3. Because we know its value, we make every packaging bag with our hearts.



- 1.The packaging bags made of PLA+PBAT+white Kraft paper, which is compostable materials.
- 2.When the packaging bag completes its commercial role, they can be degraded into soil in a year and absorbed by plants. It's really come from nature and return to nature.
- 3.No more pollution to the environment. The world will become better and better.

### The detail data of the biodegradable packaging bags

|                 |  |
|-----------------|--|
| Item:           | Professional manufacturer of fully biodegradable nuts packaging bags |
| Size&Thickness: | Custom based on your requirement                                     |
| Ink type:       | Eco-friendly Food Grade Soy Ink                                      |
| Material:       | PLA+PBAT+ Kraft paper  |
|                 |  |

|                  |   |
|------------------|---|
| Feature :        | 1).Safety Food Grade material & Perfect Printing  |
|                  | 2).Great to prevent leakage, excellent Moisture-Proof   |
|                  | 3).Strong sealing Bottom & Good Display Effect  |
| Certificates:    | FSSC22000,SGS etc.. FDA certificate can also be made if necessary   |
| Style Options:   | Flat Bottom , Stand up , side gusset , Zipper Top, With or without Window, Euro Hole , etc.   |
| Sealing & Handle | Heat Seal   |
| Surface Handling | Embossing   |
| Printing:        | Copperplate printing,Offset printing  |
| Color:           | Up to 10 colors or No printing  |
| Artwork format:  | AI,PDF,CDR,PSD,etc,   |
| MOQ:             | 10,000pcs   |
| Price:           | Based on the product Materials, Dimension, Quantity, Printing colors and other customer's Requirements (Price posted for reference only ) |
| Payment:         | T/T, Paypal,Western Union, Trade Assurance accept   |
|                  | 30% bag cost+100% printing cylinders charge as deposit,70% balance before shipment  |
| Sample:          | 1). Free & Nice stock samples offered just freight collect  |
|                  | 2). Custom samples 7-15 working days (Send by Express)  |
|                  | 3). Refund Part/Full sample fee after deposit received  |
| Lead Time:       | 15-20 working days after design confirmed.  |
| Port of loading: | Huangpu /Shenzhen/, or As per your requirement  |
| Packing:         | Export standard packaging cartons/boxes( ≤ 25Kg),as per customized packaging  |

The Feature Pictures of Biodegradable Packaging Bags





The tightly zipper, made of PLA, which can be opened and closed repeatedly, Guarantee the tightness of the bag. Can be degraded in the soil

The easy-to-tear design is convenient for consumers to open the package, and our process can ensure the position of each easy-to-tear port is consistent.





Strong stand- up bottom, with large carrying capacity. keep every pouch standing up like trained soldier

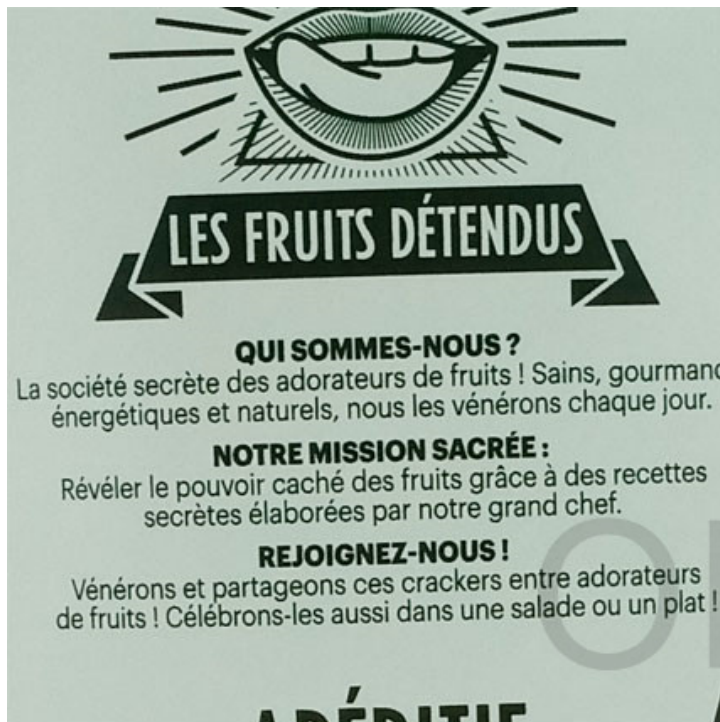


No matter what shape of the transparent window, we can help you achieve any special requirements with our profession



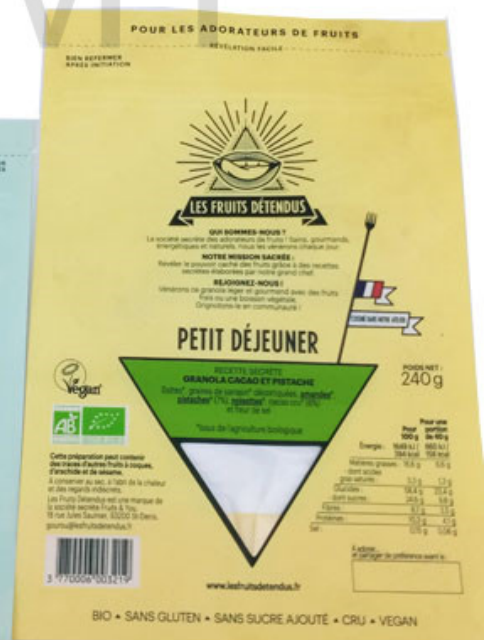
With triangle transparent window, special design show your special brand.





Accurate text printing, correctly delivering advertising information

Professional color printing without any overflow







High quality ECO friendly packaging bags for nuts packing. No more pollution to the environment, more clean to the world.

Strong tensile. The packaging bag with good tear resistance and durable



Excellent waterproof performance

The bag is waterproof and moisture-proof, and it is easy to cope with the low temperature and wet season.



High quality white Kraft paper, biodegradable PLA+PBAT film, it's environmentally friendly and great value

The special feature of the biodegradable packaging bags for dried food.

1.Accurate text printing, correctly delivering advertising information

Professional color printing without any overflow

2.With triangle transparent window, special design show your special brand.

No matter what shape of the transparent window, we can help you achieve any special requirements with our profession

3.The easy-to-tear design is convenient for consumers to open the package, and our process can

---

ensure the position of each easy-to-tear port is consistent.

4.The tightly zipper, made of PLA, which can be opened and closed repeatedly,

Guarantee the tightness of the bag. Can be degraded in the soil

5.Strong stand- up bottom , with large carrying capacity. keep every pouch standing up like trained soldier

6.Strong tensile. The packaging bag with good tear resistance and durable

7.High quality white Kraft paper, biodegradable PLA+PBAT film, it's environmentally friendly and great value

8.Excellent waterproof performance

The bag is waterproof and moisture-proof, and it is easy to cope with the low temperature and wet season.

9.High quality ECO friendly packaging bags for nuts packing. No more pollution to the environment, more clean to the world.

The Picture of biodegradable valve for the packaging bags



1.In the market, 99.9% of the air valves are made of PE plastic, and it takes 1000 years to completely degrade. It is a great harm to the environment. However, the PLA air valve is made of plant material and can be degraded in the soil within 2-3 years. Become water and carbon dioxide absorbed by plants.

2.It is technically difficult to make an air valve from PLA. This technology is in the hands of a very small number of manufacturers, OEMY company is one of them.

### The recommended size of side packaging bags

| Size<br>(W*H*Bottom cm) | Seed Package | Flour Package | Pet Food Package | Rice Package |
|-------------------------|--------------|---------------|------------------|--------------|
|                         |              |               |                  |              |



---

|   |       |       |       |       |
|---|-------|-------|-------|-------|
| 9 x 6 x 6   | 30g   | 40g   | 40g   | 80g   |
| 10 x 15 x 6                                       | 40g   | 50g   | 50g   | 100g  |
| 12 x 20 x 8                                       | 90g   | 170g  | 130g  | 300g  |
| 14 x 20 x 8                                       | 130g  | 230g  | 180g  | 370g  |
| 14 x 22 x 8                                       | 160g  | 350g  | 230g  | 420g  |
| 16 x 22 x 8                                       | 210g  | 400g  | 330g  | 550g  |
| 16 x 26 x 8                                       | 260g  | 510g  | 380g  | 650g  |
| 18 x 26 x 8                                       | 360g  | 650g  | 440g  | 890g  |
| 18 x 30 x 10                                      | 440g  | 750g  | 630g  | 1120g |
| 20 x 30 x 10                                      | 510g  | 1110g | 680g  | 1440g |
| 22 x 31 x 10                                      | 660g  | 1400g | 950g  | 1660g |
| 23 x 35 x 10                                      | 900g  | 1750g | 1340g | 2500g |
| 30 x 40 x 12                                      | 1200g | 2100g | 1500g | 3300g |
| Can Be Customized As Your Requirements            |       |       |       |       |
| The Data In The Table Are Only For Your Reference |       |       |       |       |

The Application of packaging bags



1. Biodegradable packaging bags are environmentally friendly bags that are very versatile. Mainly used for packaging: coffee bean, coffee powder, Tea leaves, Rice, dried fruit, snack food, dried meat, whole grains, tea, etc.

2. It's time to change your plastic packaging bags to biodegradable packaging bags. Less pollution to the environment, more green to the world.

The steps of our sales and production.



- 1.OEMY company is specialized in offering bio-degradable packaging solutions for different products.
- 2.Client is our first priority . We are dedicated to meeting clients. Demands and putting much resource into R&D. Our mission is to provide the right product and service for our clients.
- 3.We have the best machine and the most advanced technologies within the industry to produce the most detailed and high quality products. We ensure that all your requirements will be fulfilled on time.
- 4.Our success depends on the support of clients. Your success is our concern! We package your success, your excellent packages start from here.

## Payment and Shipping OEMY Packaging

### Payment



T/T

### Shipping

A. If the quantity of order is not very big, it would be better to sent them by express delivery, such as TNT, DHL, UPS or Fedex etc.

B. If order is big, it would be better to sent them by air shipping or sea shipping through your nominated forwarder agent. Our long-term cooperated forwarder agents are also available.



5-7 working days  
[www.dhl.com](http://www.dhl.com)



5-7 working days  
[www.fedex.com](http://www.fedex.com)



7-10 working days  
[www.tnt.com](http://www.tnt.com)



5-7 working days  
[www.ups.com](http://www.ups.com)



5-7 working days  
[www.ems.com.cn](http://www.ems.com.cn)



[www.oempackagingbag.com](http://www.oempackagingbag.com)

Get customized packaging solution fro your order now.

Tel & WhatsApp & Wechat :#86+13711875799

Email: [admin@oempackagingbag.com](mailto:admin@oempackagingbag.com)

Overview of Workshop

























## FQA

Q1: Are you a manufacturer?

A: Yes, We are a 15 years manufacturer integrating R&D, manufacture, customization and marketing. Our factory Dongguan City of Guangdong Province, China

Q2: What information should I let you know about if I want to get a precise quotation?

A: Bag type, material, size, thickness, Product weight required

Q3: What is there any sample charge & is it refundable?

A: Stock samples for free, but you need pay the freight.

If you need us to make sample with your design, you need to pay the sample cost. And if place the order in the future and quantity reach certain number, we can return the sample cost to you.

Q4: Do you have any inspection for the products?



---

A: Quality and 100% biodegradable bags is our culture, we attach great importance to quality control from the very beginning of manufacturing, using 100% biodegradable material to make packaging bags, such as PLA, PBAT etc.

Q5: Are the air valve and zipper of the bags 100% biodegradable?

A: Yes. And the 100% biodegradable air valve and zipper were developed by our technicians.

Q6: Will you sell the bags with my trademark to other clients?

A: Absolutely not. We are an established company. We understand that one has copyright in his/its trademark. We respect the right and privacy of our clients and will not disclose to others.

Q7: What is your delivery period?

A: Our delivery period is generally within 15-25 days, but the actual delivery period depends on the requirements

Product

link :

<https://www.oempackagingbag.com/8-years-exporter-china-automatic-biscuits-potato-chip-candy-peanut-weighing-and-packing-machine.html>